

78

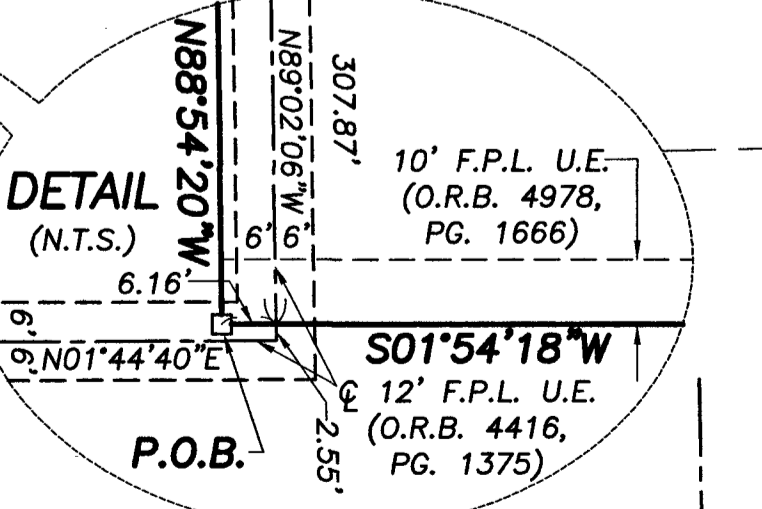
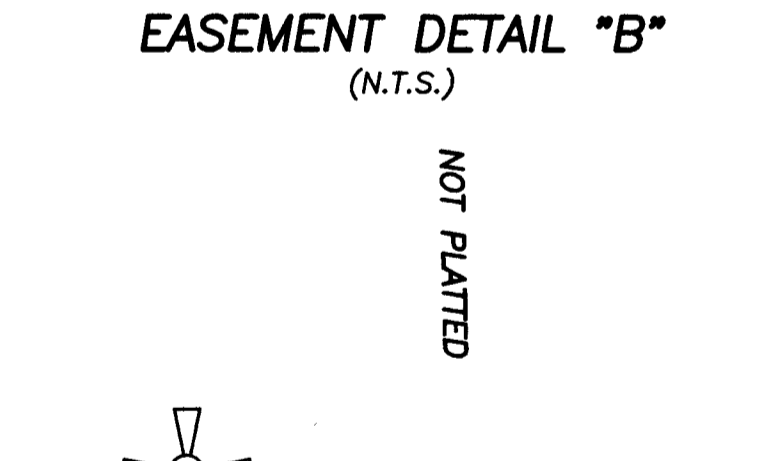
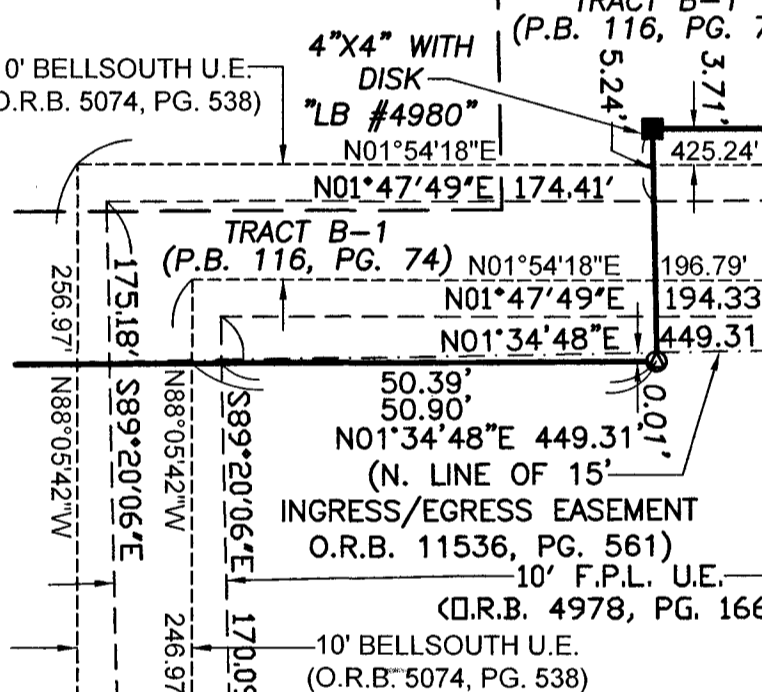
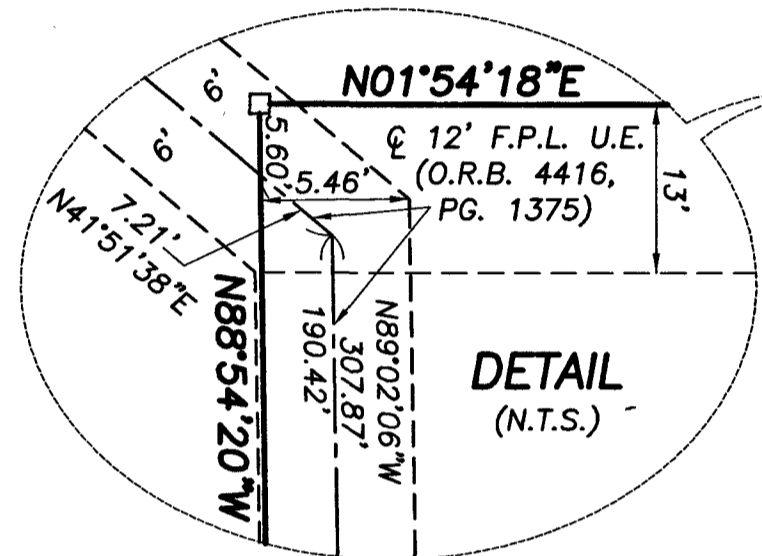
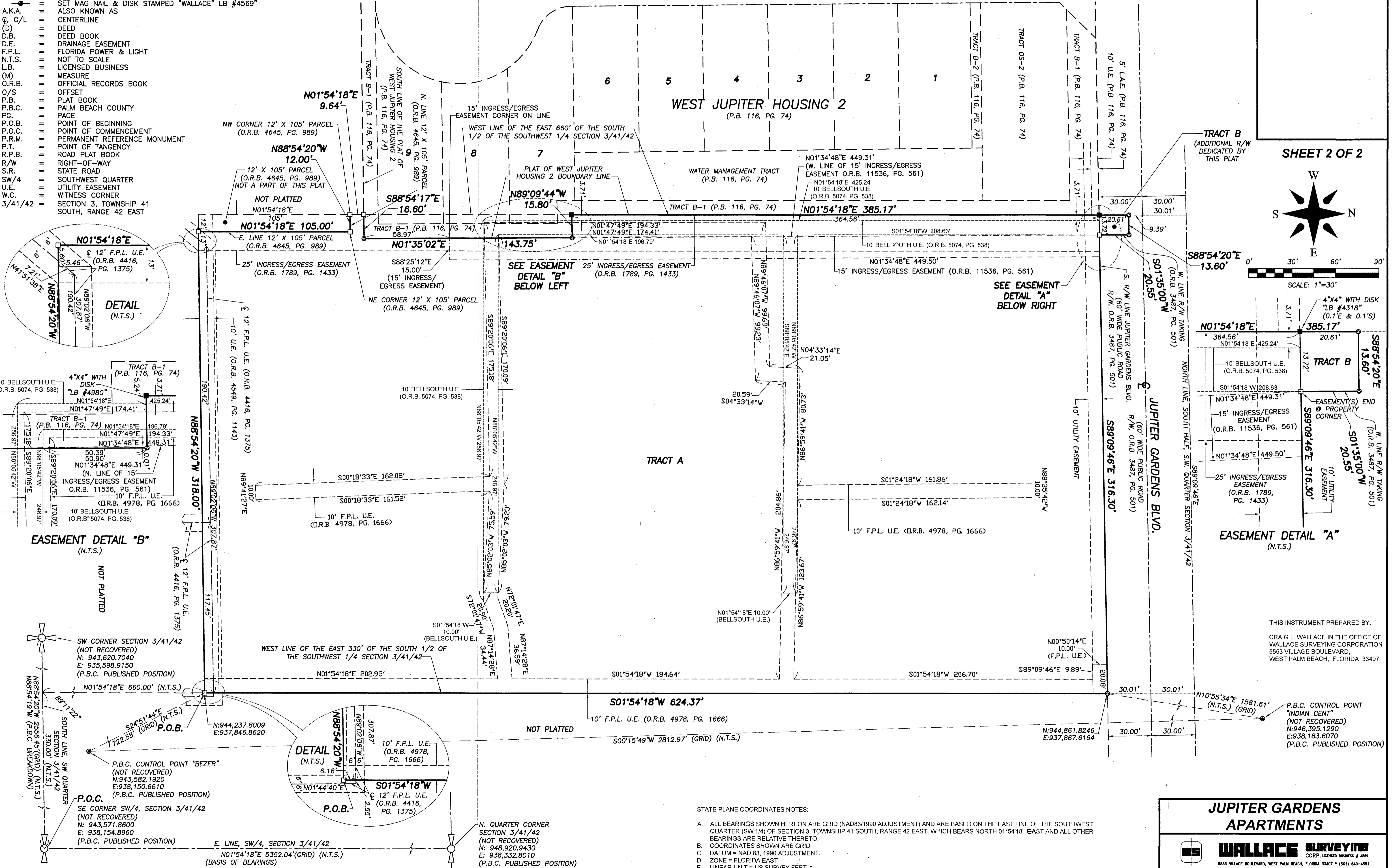
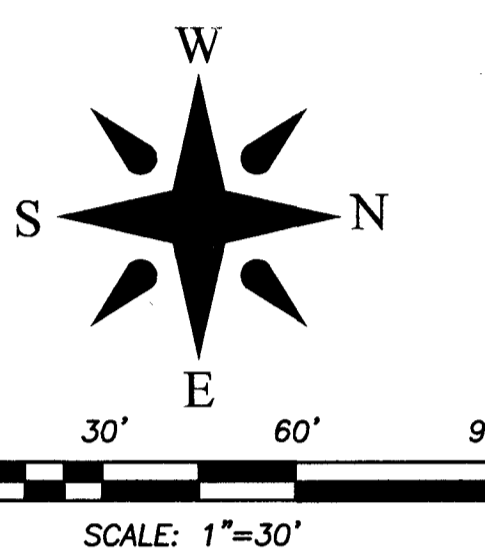
ABBREVIATIONS & SYMBOLS

- = CONCRETE MONUMENT FOUND (AS NOTED)
- = SET 4"x4" CONCRETE MONUMENT WITH DISK STAMPED "P.R.M. LB #4569"
- = SET 5/8" IRON ROD & CAP STAMPED "WALLACE LB #4569"
- = FOUND IRON ROD AND CAP (AS NOTED)
- ⊙ = SET MAG NAIL & DISK STAMPED "P.R.M. LB #4569"
- ⊙ = SET MAG NAIL & DISK STAMPED "WALLACE" LB #4569"
- A.K.A. = ALSO KNOWN AS
- C, C/L = CENTERLINE
- (D) = DEED
- D.B. = DEED BOOK
- D.E. = DRAINAGE EASEMENT
- F.P.L. = FLORIDA POWER & LIGHT
- N.T.S. = NOT TO SCALE
- L.B. = LICENSED BUSINESS
- (M) = MEASURE
- O.R.B. = OFFICIAL RECORDS BOOK
- O/S = OFFSET
- P.B. = PLAT BOOK
- P.B.C. = PALM BEACH COUNTY
- P.G. = PAGE
- P.O.B. = POINT OF BEGINNING
- P.O.C. = POINT OF COMMENCEMENT
- P.R.M. = PERMANENT REFERENCE MONUMENT
- P.T. = POINT OF TANGENCY
- R.P.B. = ROAD PLAT BOOK
- R/W = RIGHT-OF-WAY
- S.R. = STATE ROAD
- SW/4 = SOUTHWEST QUARTER
- U.E. = UTILITY EASEMENT
- W.C. = WITNESS CORNER
- 3/41/42 = SECTION 3, TOWNSHIP 41 SOUTH, RANGE 42 EAST

JUPITER GARDENS APARTMENTS

BEING A PLAT OF A PARCEL OF LAND IN THE SOUTHWEST QUARTER OF SECTION 3, TOWNSHIP 41 SOUTH, RANGE 42 EAST, PALM BEACH COUNTY, FLORIDA

SHEET 2 OF 2



THIS INSTRUMENT PREPARED BY:
 CRAIG L. WALLACE IN THE OFFICE OF
 WALLACE SURVEYING CORPORATION
 5553 VILLAGE BOULEVARD,
 WEST PALM BEACH, FLORIDA 33407

P.B.C. CONTROL POINT
 "INDIAN CENT"
 (NOT RECOVERED)
 N: 946,395.1290
 E: 938,183.6070
 (P.B.C. PUBLISHED POSITION)

- STATE PLANE COORDINATES NOTES:
- A. ALL BEARINGS SHOWN HEREON ARE GRID (NAD83/1990 ADJUSTMENT) AND ARE BASED ON THE EAST LINE OF THE SOUTHWEST QUARTER (SW 1/4) OF SECTION 3, TOWNSHIP 41 SOUTH, RANGE 42 EAST, WHICH BEARS NORTH 01°54'18" EAST AND ALL OTHER BEARINGS ARE RELATIVE THERETO.
 - B. COORDINATES SHOWN ARE GRID
 - C. DATUM = NAD 83, 1990 ADJUSTMENT.
 - D. ZONE = FLORIDA EAST
 - E. LINEAR UNIT = US SURVEY FEET
 - F. TRANSVERSE MERCATOR PROJECTION
 - G. ALL DISTANCES ARE GROUND UNLESS OTHERWISE LABELED OTHERWISE AS MEASURED ON HORIZONTAL PLANE.
 - H. SCALE FACTOR = 1.00003234
 - I. GROUND DISTANCE X SCALE FACTOR = GRID DISTANCE

JUPITER GARDENS APARTMENTS

WALLACE SURVEYING
 CORP. LICENSED BUSINESS # 4549
 5553 VILLAGE BOULEVARD, WEST PALM BEACH, FLORIDA 33407 • (561) 640-4551

FIELD:	JOB NO.: 21-1385.4	F.B.	PG.
OFFICE: R.C./S.W.	DATE: FEBRUARY 2022	DWG. NO. 21-1385-3	
C/K'D: C.W.	REF: 21-1385.DWG	SHEET 2 OF 2	